

Turning Vision into Reality



Lynx Cost-Effective Statistical Kanban™ for Your Lean supply Chain

Lynx is designed to cost effectively bring ROP to your supply chain. Lynx takes the guesswork and emotion out of inventory planning and replenishment execution in four ways. It uses:

- Data – historical consumption and forecast demand
- Strategic service-level targets.
- Objective, fact-driven technique – the FlowVision® Statistical Kanban™ algorithm.
- Consumption-driven replenishment – customer demand/usage pulls products from your inventory to your customers and from your suppliers to your inventory.

Lynx applies a patent-pending statistical analysis to historical sales data and recommends a reorder point (ROP) for each inventory item and location. This ROP supports your strategic service-level targets. Lynx also accommodates MOQs and order multiples.

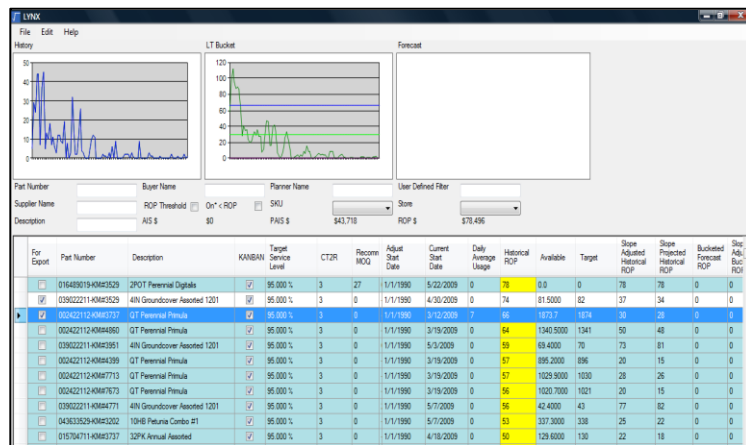
When product has limited availability, Lynx allocates products to stores with the historically highest volumes, maximizing your profit and store-level sell-through.

The planner analyzes the Lynx recommended ROPs. Lynx presents to the planner a variety of planning options to optimize your available inventory – not only at your facility, but at each store. As store customers purchase your live product, inventory at each store location drops below ROP, triggering a replenishment for that store.

Lynx’s user-friendly screens and graph-based displays enable quick, visual, exception-driven analysis.

FlowVision’s expert consultants ensure that Lynx interfaces properly with your data sources and business systems, and that all users receive training.

Lynx Main Screen Showing Various ROP Options



Features

- Automatically sizes inventory in your facility and your supply chain
- Allows “visual planning” to easily analyze parts performance
- Objective, statistically-determined, service-level-driven mix and quantity targets by inventory item and location
- ROP logic supports replenishing based on consumption – pull, not push
- ROP and MOQ values can be uploaded as business-system item-master parameters
- Results accommodate historical and forecast demand
- User-friendly and intuitive

Benefits

- Increase customer service
- Reduce Inventory
- Reduce shrink
- Reduce stockouts
- Optimal inventory performance
- Reduce planning time
- Cost-effective software solution

What Our Customer Say:

LYNX has allowed Alliance Laundry Systems (ALS) Service Parts Planners to focus on the items that are of the most importance to our customers. By focusing on the correct items the company, in just four months, realized an inventory reduction of \$500,000. The FlowVision® planning methodology identified, at the beginning of the implementation, an inventory reduction target of \$1,500,000. LYNX enabled ALS to achieve 35% of the goal in just a few months. Since the planners are now "working" the correct parts, the same material planners were able to quickly identify material that could be restocked with suppliers and/or utilized by the plant for production driving additional cost savings.

The planning methodology is sound which is only surpassed by the information being presented in a user friendly and intuitive software package.

Brian Stark
General Manager - Genuine Parts
Alliance Laundry Systems LLC